



Doods Place, Reigate

Guide Price £350,000





“

Bright and spacious throughout with a southerly aspect to the living space, this 1960's, split level maisonette enjoys leafy views in a central location

”

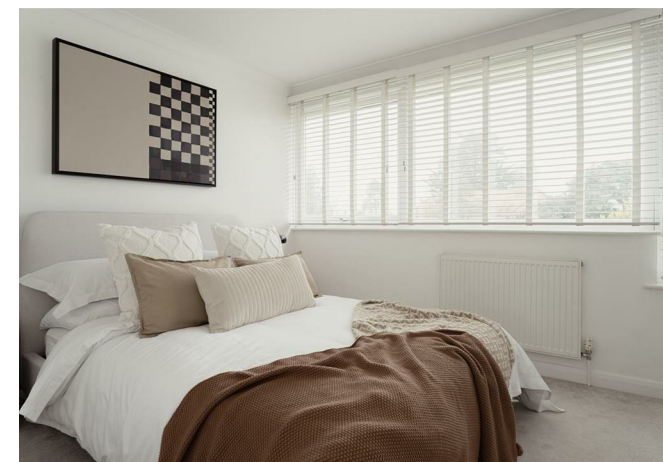


Located in the heart of Reigate, on Doods Road, this split level maisonette has been updated internally to create a welcoming and homely space. Typical of the era, the rooms are generous and square and the natural light pours in, through large picture windows, which with the southerly aspect, really bathe the property in light.

As you enter through your own front door, there is enough room for coats and shoes before heading upstairs to the open plan living space. There is plenty of room for a table and chairs as well as the sofas and being semi open to the kitchen, the light shines in from the double aspect. Not only is the property full of light, it also enjoys leafy views to both the front and rear, quite unique for such a central location!

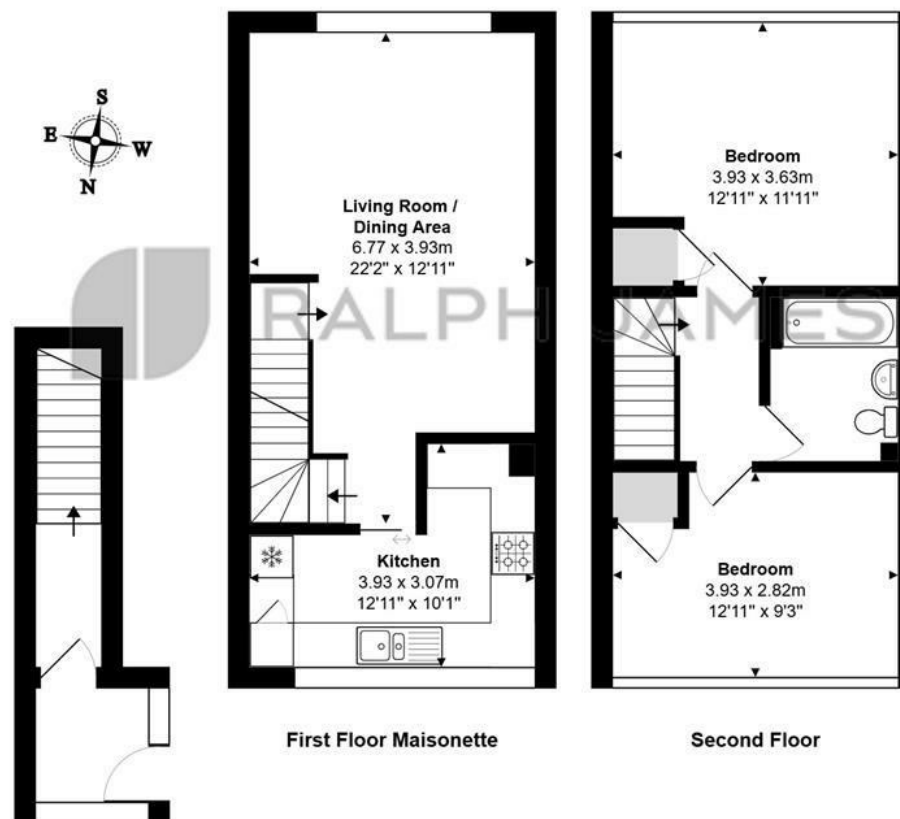
On the second floor you will find two good size double bedrooms and the modern bathroom. There is built in storage

Outside, the grounds at Doods Place are well maintained. There is a large pond at the front and lots of lawn to the rear to take a blanket or chair down and enjoy the sunshine. The property also comes with an allocated parking space.



Need to know

- Spacious, split level maisonette in popular central location, with no chain
- Modernised internally to create a warm and inviting space
- Open plan living space and kitchen on the first floor
- Two generous bedrooms on the second floor
- Bright, modern bathroom
- Own private entrance with hallway for coats and shoes
- Allocated parking space
- Large, immaculately kept, communal grounds to enjoy
- Over 800 sq ft of space
- Just over half a mile to Reigate train station, local shops and the fantastic Beryl & Pegs coffee shop



Ground Floor

First Floor Maisonette

Second Floor

Doods Place, Reigate
Total Area: 76.6 m² ... 824 ft²

FOR ILLUSTRATIVE PURPOSES ONLY.

Whilst every attempt has been made to ensure the accuracy of the floor plan shown, all measurements, positioning, fixtures, features, fittings and any other data shown are an approximate interpretation for illustrative purposes only and are not to scale.

No responsibility is taken for any error, omission, miss-statement or use of data shown.

The above statement applies to both 'Still Moving London LTD' and the Company or individual displaying this floor plan.

Unauthorised reproduction prohibited.

© Still Moving London LTD (www.stillmoving.london)

Interested?

reigate@ralphjames.co.uk
01737 333677

ralphjames.co.uk

RALPH JAMES